

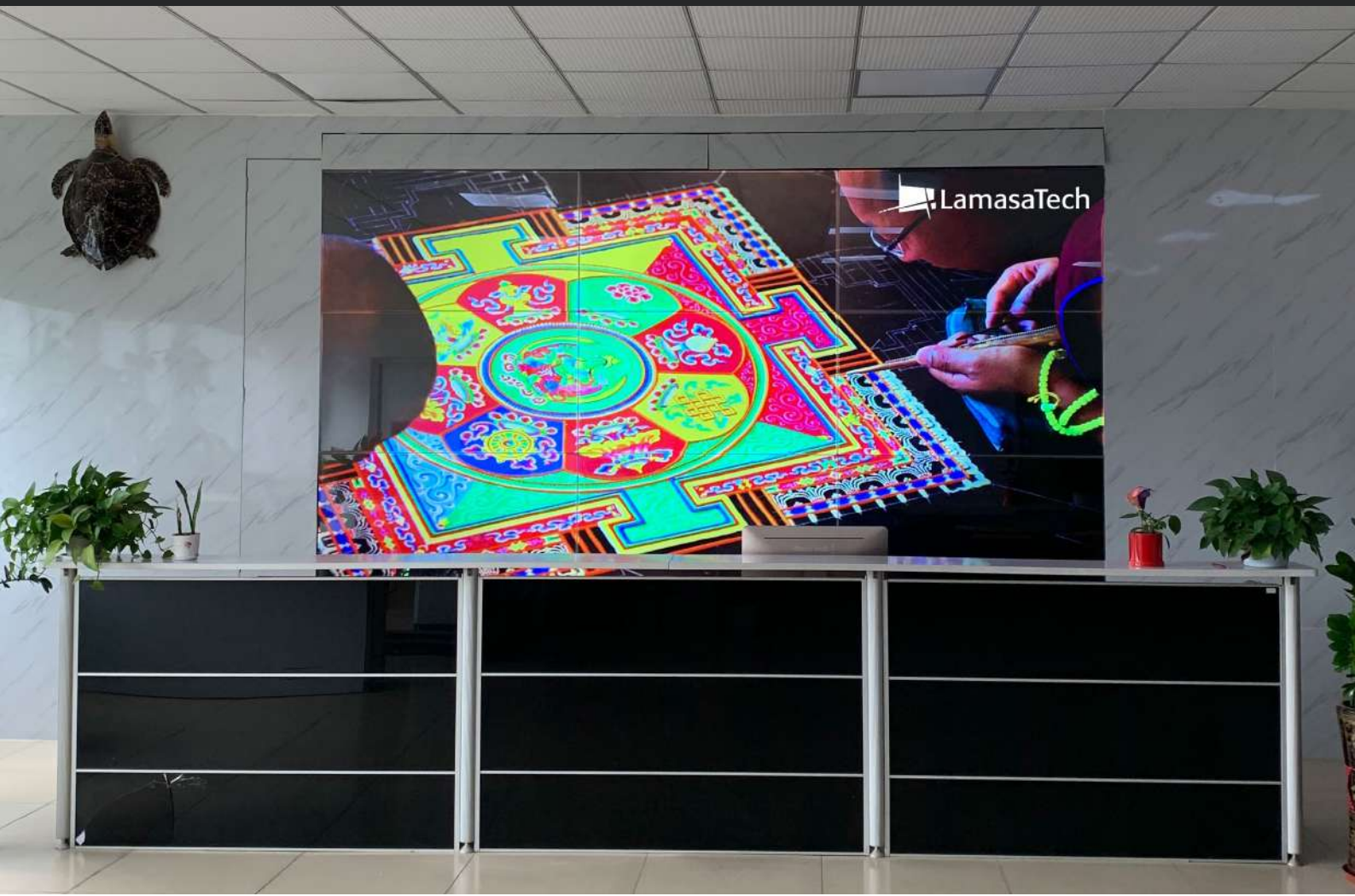


Seamless LCD Video Walls

Industry-leading 55" video wall displays with 0mm
screen-to-screen bezel

www.lamasatech.com

in f 





55" seamless video walls

LamasaTech's beautifully crafted zero bezel LCD video walls provide a seamless and eye-catching display, with stunning image quality and uniform colour accuracy.

Our video walls deliver unparalleled performance in indoor environments including;



Network operation centres



Control rooms



Hotels & airports



Corporate offices



Schools & universities



Retail stores & showrooms

Key features



Lower temperature than traditional video walls



Built to run 24 hours a day 7 days a week



Full HD/UHD resolution



Noise free



A life expectancy of over 60,000 hours



3-year warranty

Unrivaled image quality

- ✓ Crisp and sharp imagery
- ✓ Uniform brightness and colour across the display
- ✓ 500 cd/m² and 700 cd/m² brightness options to suit your environment
- ✓ Automatic calibration for individual panels or entire video wall display

Immersive content display

- ✓ Mounting systems to suit your environment - standard wall mount, pop-out mount (front service) or freestanding cabinet
- ✓ Wide viewing angle for an optimum viewing experience in a variety of spaces
- ✓ Display one input across the full display using Daisy Chain, or pair with a processor to display different inputs on different panels

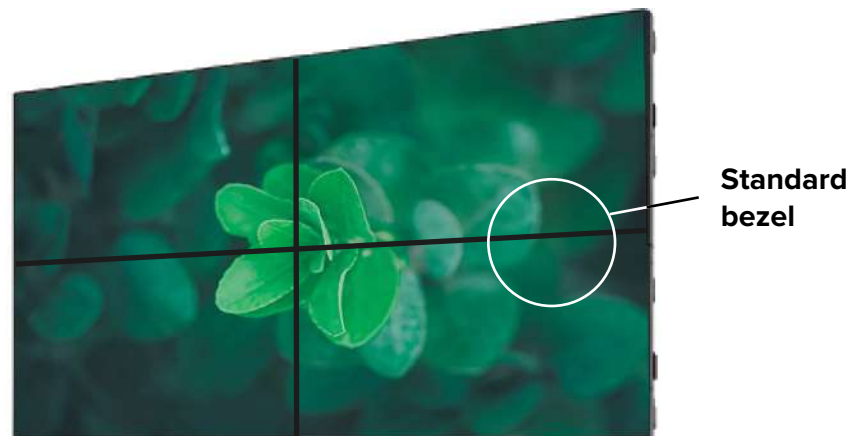
Smart energy efficiency

- ✓ Low noise fan-less temperature control
- ✓ IR remote control to switch the display on and off easily
- ✓ Uses up to 75% less power than competing large-format displays
- ✓ Requires no HVAC or electrical system upgrades

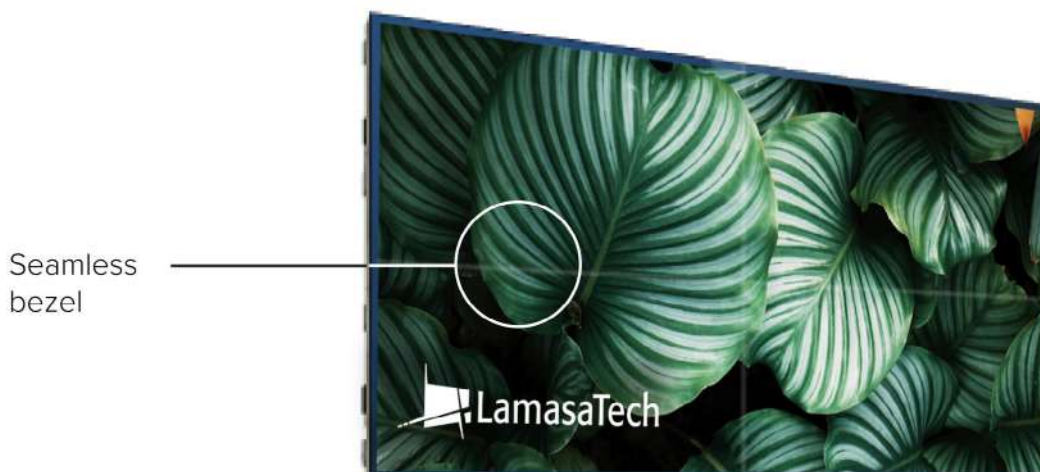
Best-in-class zero bezel video walls

Our bezel-less LCD video walls are truly seamless, with 0mm screen-to-screen bezel. This is created using a bezel compensation process, which merges the pixels between displays where the displays meet on each edge.

The gap between displays no longer appears as a black line or gap. Instead the image merges across displays.



Traditional video wall

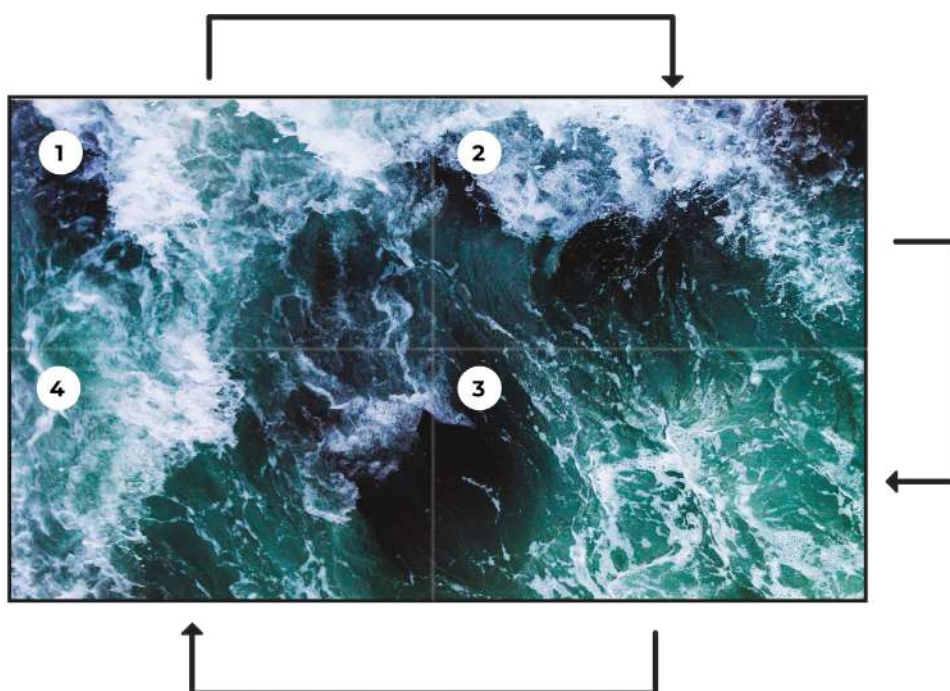


Seamless video wall

High performance video wall processors

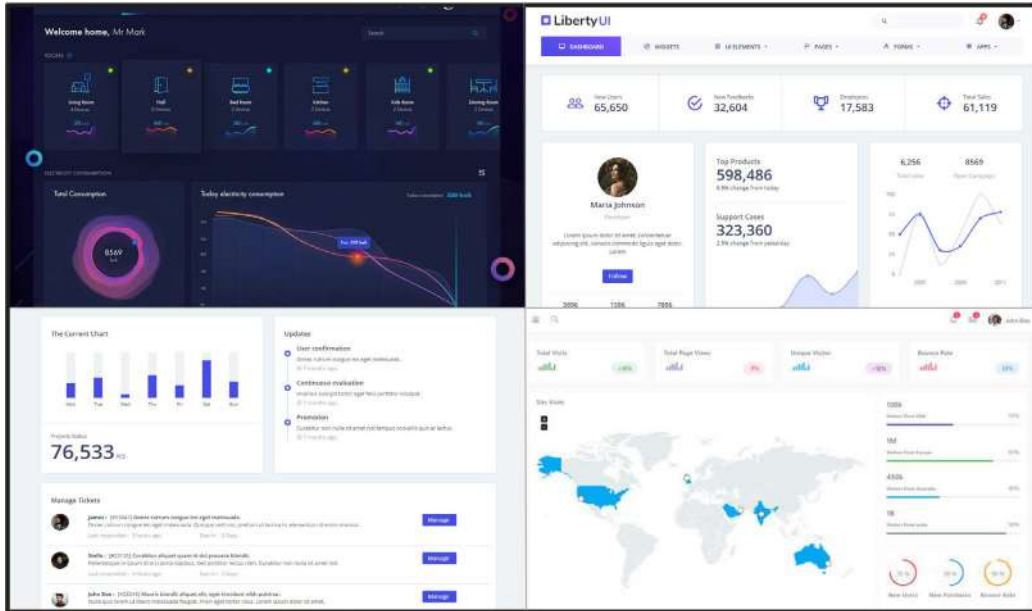
Daisy chaining

Video wall daisy chaining available for up to 18 displays. Daisy chaining your displays allows you to present 1 input across the entire video wall. This is a simple solution for presenting 1 piece of content on the display such as a video or advertisement.



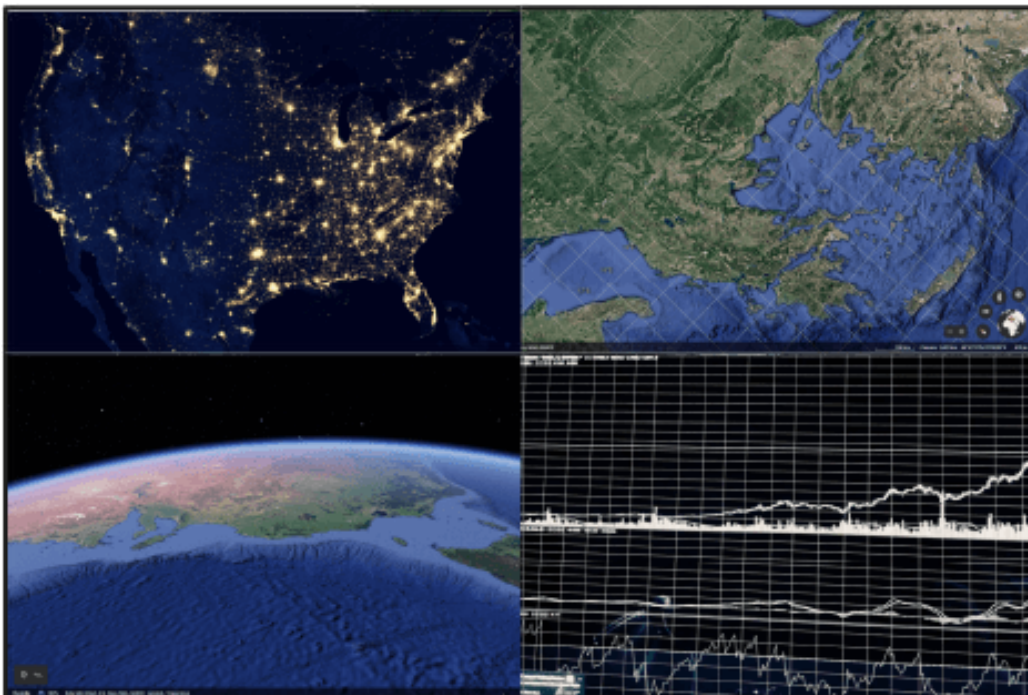
Advanced video wall processor

Our advanced video wall processors have multiple inputs and outputs. With the processor you can cascade different content instantly on different sections of your display. You can drag, drop and resize your inputs onto different panels or sections (multiple panels) of your video wall. For example, you could have key dashboards and performance trackers on each panel. You can preview the inputs on your control device.



All-in-one control room solution

Pair our seamless video wall displays with an all-in-one control room solution. This solution is ideal for network operation centres, control rooms and command centres. LamasaTech can build your high-performance video wall control system using our input nodes, output nodes and an operator node. The operator node can remotely control the inputs and inputs and preview the content on display. The processor is built-in and so there is no requirement for a separate controller or server.



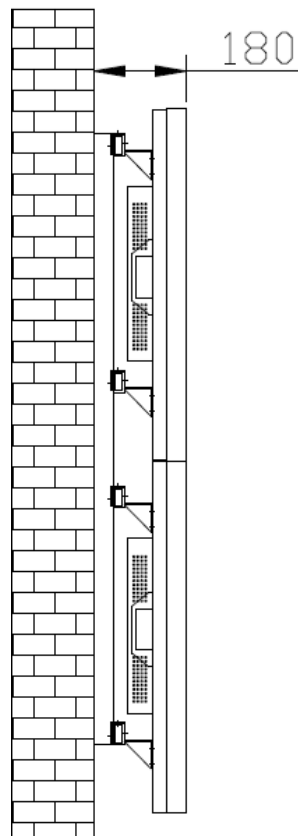
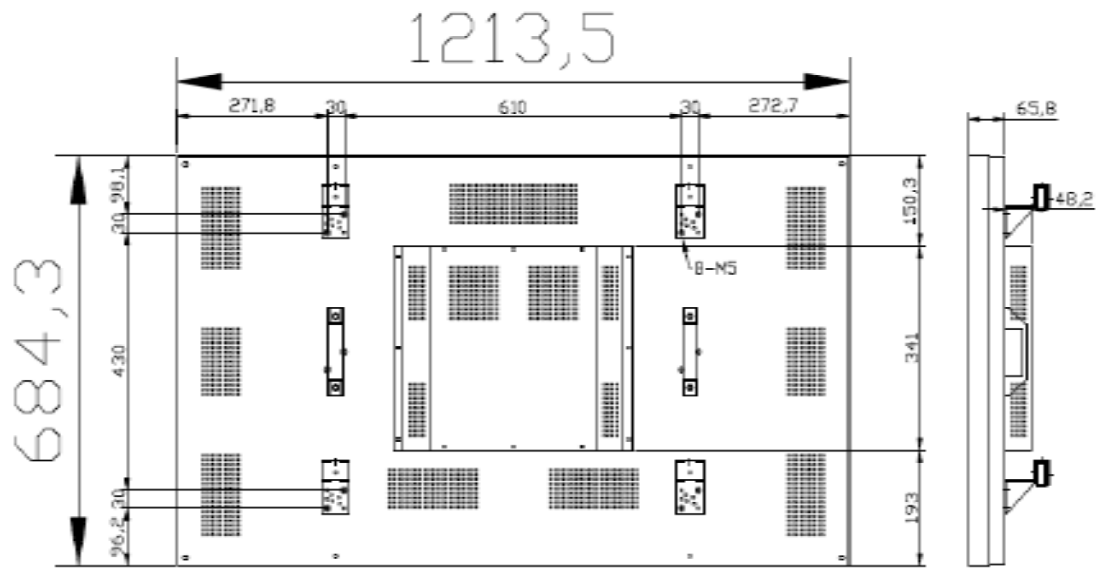
Specifications

Model	0 mm bezel video wall LD-VW55_ZB(MB/HB)(FHD/UHD)
Panel size	55" LG LCD. LED backlight
Bezel width	Right, bottom: 0 mm Left, top: 0 mm Bezel width in total: 0 mm
Colors	16.7M
Resolution	1920x1080 (FHD) / 3840 x 2160 (UHD)
Pixel Pitch	0.63 × 0.63mm
Brightness	500cd/m ² (MB)/ 700cd/m ² (HB)
Contrast Ratio	1400:1
View angle	178° / 140°; 120°/ 120°
MDBF	60000H (Upgrade any video wall to 80,000HMDBF by adding LD VW80K_UPGMDBF)
Response time	8ms
Material of housing	Metal
Color of housing	Black
Systems	PAL/NTSC/SECAM
Operation method	Remote control optional
SATA interface (Control signal)	RS232 (RJ45-8)
SATA loop out (Control signal)	RS232 (RJ45-8)
OSD languages	English, Chinese, multi languages optional
HDMI input	1xHDMI
DVI input	1xDVI
VGA input	1xVGA(D--SUB 15PIN)
AV input	1xBNC (CVBS /Videoin)
AV output	1xBNC (CVBS/Video out)

Frequency	50Hz, 60Hz ,70Hz
Power supply	AC100~240V,50/60Hz
Power consumption	≤250W
Standby power consumption	3W
Operation temperature	0°C ~ 50°C
Storage temperature	Minus 20°C ~ + 60°C
Operation & Storage humidity	20%~80%
Installation methods	Standard wall mount, pop-out mount (front service), freestanding floor cabinet
Dimension of unit screen (WxHxD mm)	1213.5 x 684.3 x 135.5 mm (Not including wall mount brackets)
Net Weight of unit screen	41.0kg



Drawings



*All measurements provided are in mm

CLOTHES FOR BROS

OUR BIGGEST SALE YET

www.clothesforbros.com

SALE

Check the selection

TRAIN DEALS

LONDON - MANCHESTER	£39 RETURN
EDINBURGH - DURHAM	£33 RETURN
LONDON - NEWCASTLE	£78 RETURN
MANCHESTER - YORK	£20 RETURN

For more great deals visit www.expressservice.com

More technology solutions from LamasaTech...

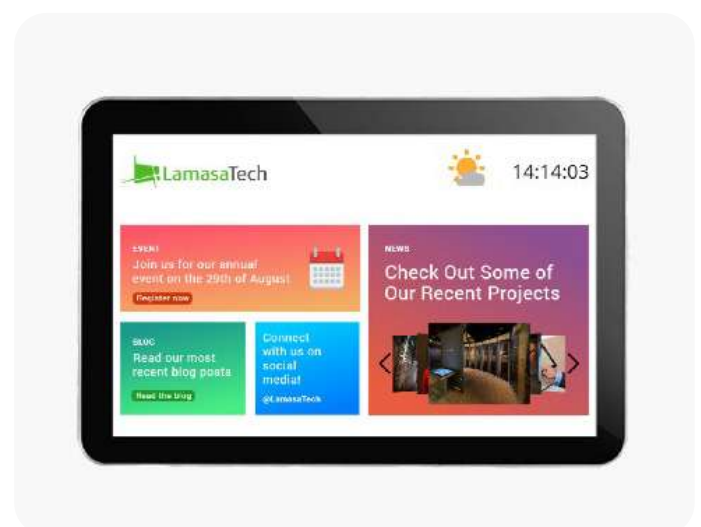
Visitor and employee sign-in kiosk



Kiosks and freestanding displays



PeakSignage digital signage platform



For more information on the products we offer please visit www.lamasatech.com



Contact us

UK: +44 (0) 191 341 0016

US: +1 (805) 308-9623

hello@lomasatech.com

lomasatech.com