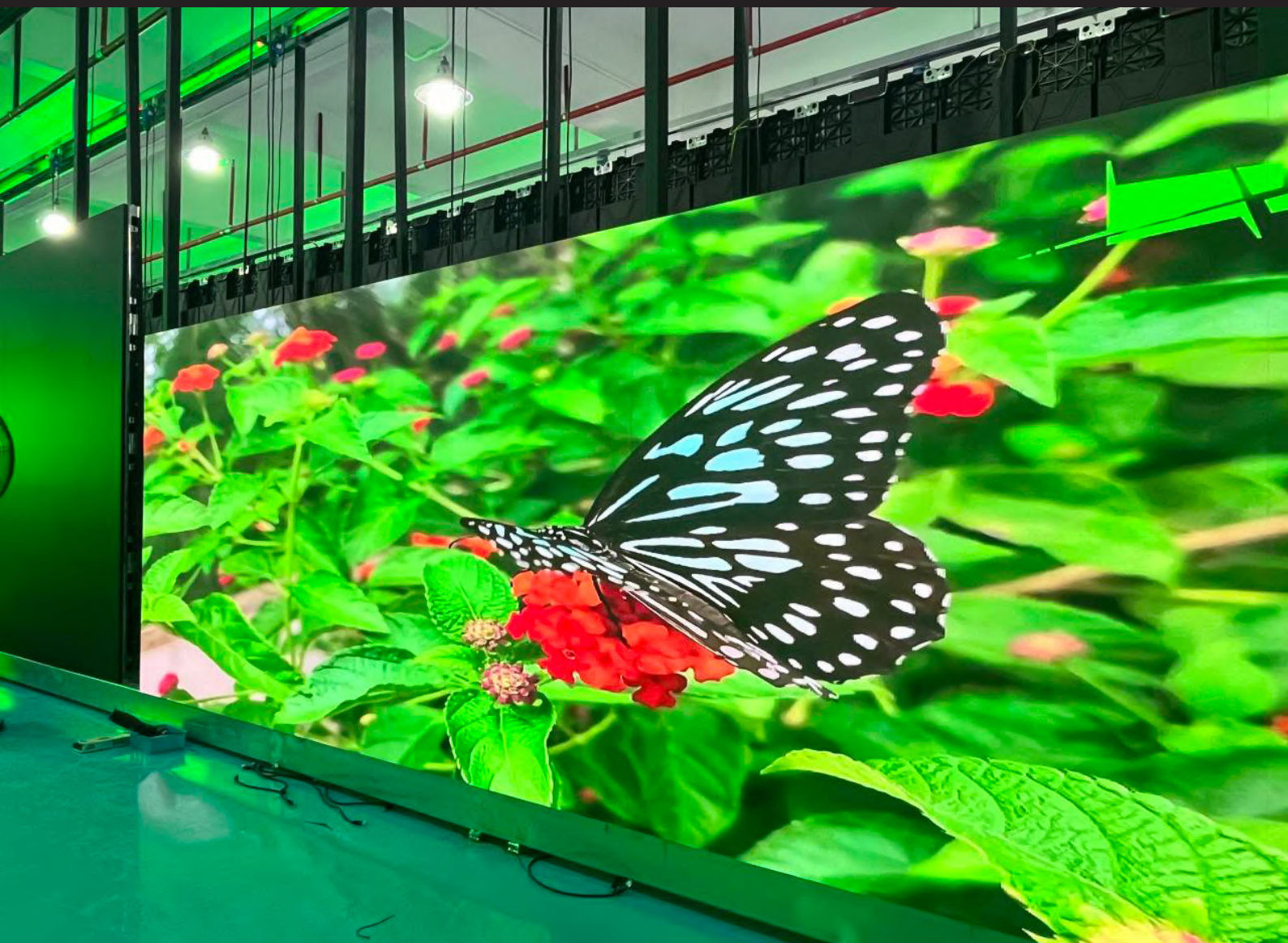




## True Zero Bezel Indoor Fine-Pitch LED Video Wall

[www.lamasatech.com](http://www.lamasatech.com)

in f 



# Truly seamless LED video walls for indoor use

## Outstanding image quality

Deliver sharp and clear visuals with our super-fine 1.26 or 1.89 pixel pitch LEDs, designed for indoor use where audiences will be viewing the display up close.

## Seamless imagery

The LED cabinets have no outer frame which results in a true zero bezel display when multiple panels are tiled together.

## Simple installation

Designed to simplify the installation of LEDs the 55" cabinets are larger than traditional LED cabinets, so there's less to install and configure.

## Replace LCD video walls effortlessly

Compatible with VESA mounts, the LEDs can directly replace an LCD video wall without having to change your existing structure or add new mounting.

## Easy front access

Serviced from the front, the LEDs can be accessed easily for any required maintenance or changes without needing rear access space.

## True-to-life colour accuracy

Colours are vibrant and lifelike thanks to the high 8000:1 contrast ratio.

## Readable in bright environments

The LED panels have an adjustable brightness of 600-900 nits and a 98% brightness uniformity ensuring content will be crystal clear even in bright rooms with a lot of sunlight.



# Capture the attention of your audience with vibrant and immersive imagery

---

Create an eye-catching seamless display with our beautifully crafted true zero-bezel LED video walls. These fine-pitch, high-resolution LEDs provide crisp and sharp imagery close to the resolution of an LCD video wall, without breaking the bank.

Replace existing LCD video walls easily without having to make changes to your existing mounting structure, thanks to their compatibility with VESA mounts.

Direct-view LEDs deliver a seamless display in indoor environments including command control rooms, colleges and universities, retail stores and malls, hotels and hospitality venues.



## High-resolution

With a narrow 1.26 or 1.89 pixel-pitch, the displays provide sharp visuals in indoor spaces with close viewing distances. You can create a FHD display easily with a 2x2 configuration in the 1.26 pixel pitch, or a 3x3 configuration in the 1.89 pixel pitch.



## Easy installation

Unlike traditional small LED cabinets, our LED displays are designed to replicate LCD video wall panels in a 55" cabinet, making it easier to configure and install your display. If you have VESA mounts already in place, you can simply replace LCD panels with our LED cabinets.



## Simple control control

Present one input across the entire display, such as a digital signage player, ideal for advertising and communications. To display multiple inputs across sections of your display or for command control rooms, pair your video wall with our advanced video wall processor.



## Robust components

Manufactured to the highest standards with commercial-grade components, the LED displays are designed to run seamlessly 24/7 with an average lifespan of 100,000 hours or more.



## 3-year warranty

Our true zero bezel LED video walls are provided with a standard 3-year warranty included for your peace of mind.

# LED vs LCD visual comparison

True zero bezel 55" LED cabinets create a seamless display.



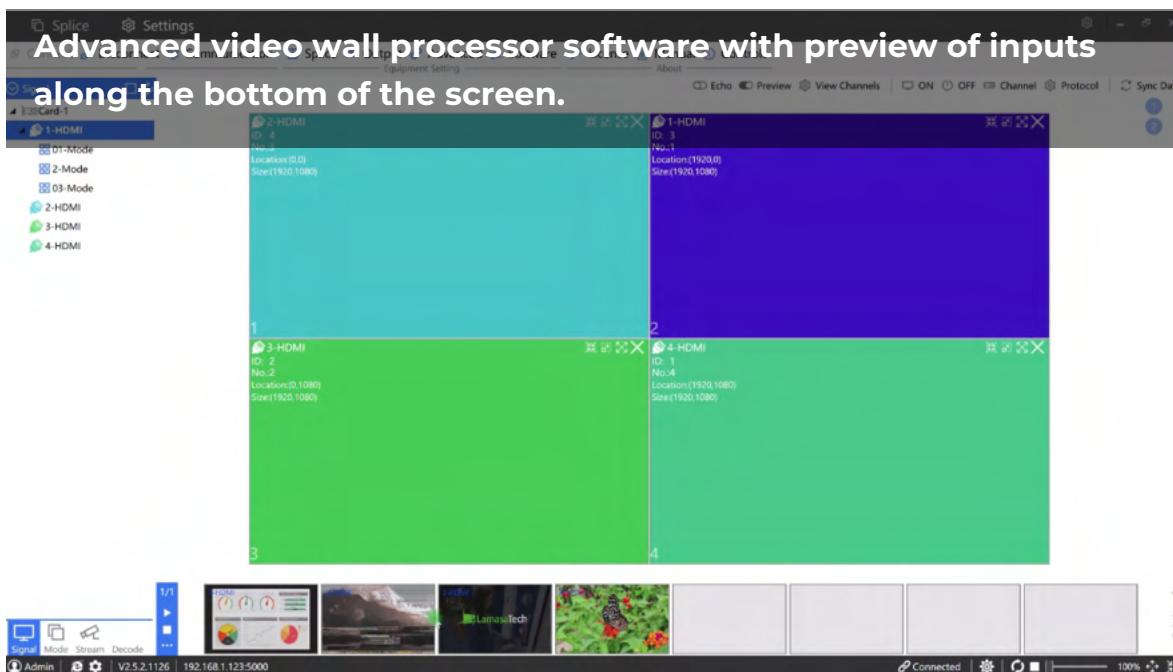
Narrow bezel 55" LCD panels create a near-seamless display with small seams.



# Advanced video wall processor

With an advanced video wall controller, you can present multiple inputs across your display. For example, command control rooms can present a feed from each PC onto a different panel or section of the video wall. See a short demo video of our advanced video wall processor [here](#).

- Drag, drop and resize inputs easily - across one panel, multiple panels, or a section of a panel
- Scalable design - built to meet your exact number of inputs and outputs
- Preview inputs on your PC before publishing them to the video wall
- Control your display from any modern web browser without having to download the software
- Select from saved layouts directly from the button pad on the controller



# Specifications - 1.26 Pixel Pitch

<b>Model</b>	<b>True Zero Bezel Indoor LED Video Wall - 1.26 Pixel Pitch</b>	
<b>Technical</b>	<b>Pixel pitch</b>	1.26 mm
	<b>LED configuration</b>	1R1G1B
	<b>LED type</b>	SMD 1010
	<b>Pixels per m<sup>2</sup></b>	629882
	<b>Module size</b>	151.2 x 340.2 x 15 mm
	<b>Module resolution</b>	120 x 270
	<b>Module material</b>	Plastic
	<b>Cabinet dimension</b>	1209.6 x 680.4 x 70 mm
	<b>Cabinet resolution</b>	960 x 540
	<b>Cabinet</b>	22kg
	<b>Scanning</b>	1/60
	<b>Grey scale</b>	14
	<b>Cabinet material</b>	Aluminium
	<b>IP rating</b>	IP45
	<b>Serviceability</b>	Front service
	<b>Components in cabinet</b>	Modules, supply power, receiving card, cables

<b>Operation</b>	<b>Brightness</b>	600-900 nits
	<b>Brightness uniformity</b>	≥98%
	<b>Colour temperature</b>	3,200 - 12,000k adjustable
	<b>Colour uniformity</b>	Within 0.003CxCy
	<b>Contrast ratio</b>	8000:1
	<b>Viewing angle</b>	140° (+/- 10) / 100° (+/- 10)
	<b>Receiver</b>	Novastar A7s Plus
	<b>Input voltage</b>	AC 110V ~ 240V
	<b>Refresh frame frequency</b>	50/60 Hz
	<b>Max refresh rate</b>	3840 Hz
	<b>Power consumption</b>	200 watts/m <sup>2</sup> average 650 watts/m <sup>2</sup> maximum
	<b>Storage environment</b>	Temperature: -40°C ~ 60°C / -40°F ~ 140°F
	<b>Operating environment</b>	Temperature: -20°C ~ 50°C / -4°F ~ 122°F
	<b>Average lifespan</b>	≥100,000 hours
	<b>Warranty</b>	3 years

# Specifications - 1.89 Pixel Pitch

**Model** True Zero Bezel Indoor LED Video Wall - 1.89 Pixel Pitch

<b>Technical</b>	<b>Pixel pitch</b>	1.89 mm
	<b>LED configuration</b>	1R1G1B
	<b>LED type</b>	SMD 1515
	<b>Pixels per m<sup>2</sup></b>	279947
	<b>Module size</b>	151.2 x 340.2 x 15 mm
	<b>Module resolution</b>	80 x 180
	<b>Module material</b>	Plastic
	<b>Cabinet dimension</b>	1209.6 x 680.4 x 70 mm
	<b>Cabinet resolution</b>	640 x 360
	<b>Cabinet</b>	22kg
	<b>Scanning</b>	1/60
	<b>Grey scale</b>	14
	<b>Cabinet material</b>	Aluminium
	<b>IP rating</b>	IP45
	<b>Serviceability</b>	Front service
	<b>Components in cabinet</b>	Modules, supply power, receiving card, cables



<b>Operation</b>	<b>Brightness</b>	600-900 nits
	<b>Brightness uniformity</b>	≥98%
	<b>Colour temperature</b>	3,200 - 12,000k adjustable
	<b>Colour uniformity</b>	Within 0.003CxCy
	<b>Contrast ratio</b>	8000:1
	<b>Viewing angle</b>	140° (+/- 10) / 100° (+/- 10)
	<b>Receiver</b>	Novastar A7s Plus
	<b>Input voltage</b>	AC 110V ~ 240V
	<b>Refresh frame frequency</b>	50/60 Hz
	<b>Max refresh rate</b>	3840 Hz
	<b>Power consumption</b>	200 watts/m <sup>2</sup> average 650 watts/m <sup>2</sup> maximum
	<b>Storage environment</b>	Temperature: -40°C ~ 60°C / -40°F ~ 140°F
	<b>Operating environment</b>	Temperature: -20°C ~ 50°C / -4°F ~ 122°F
	<b>Average lifespan</b>	≥100,000 hours
	<b>Warranty</b>	3 years

## Product codes

LT-VW55\_TZBHB1.26

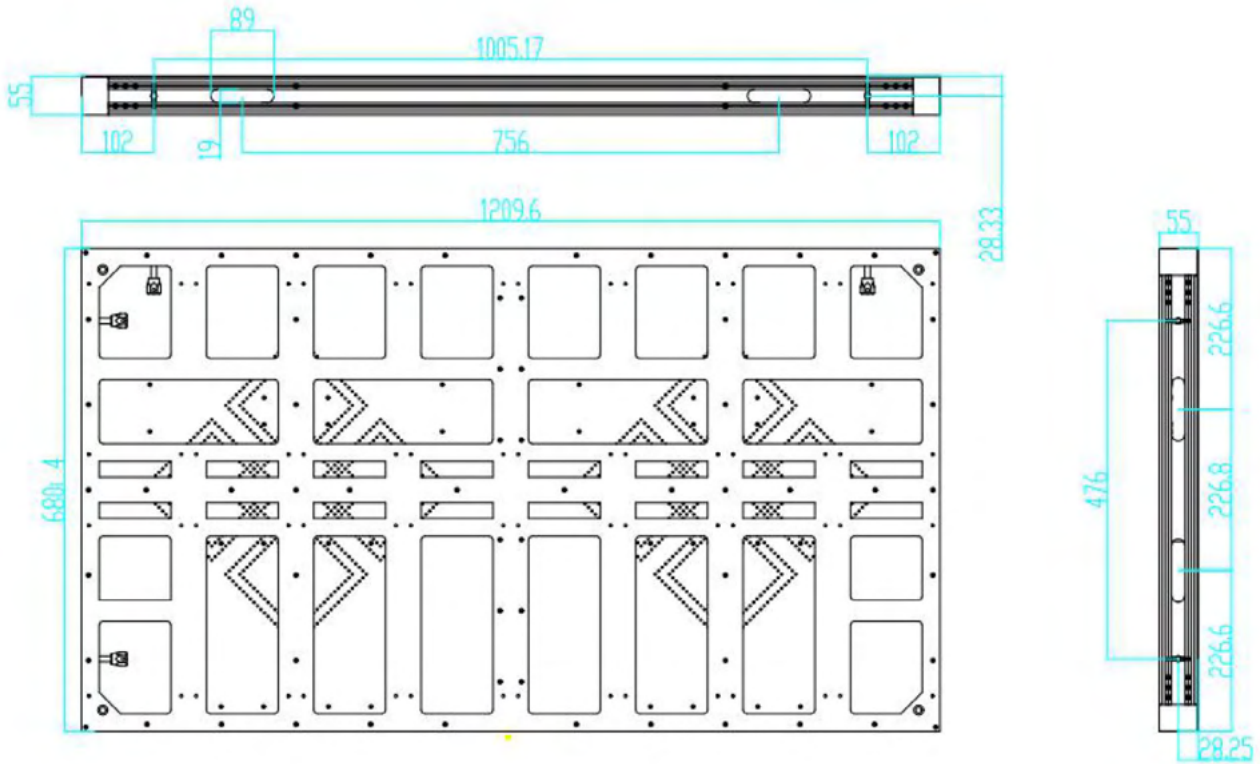
True Zero Bezel 55" Video Wall 1.26 pixel pitch

LT-VW55\_TZBHB1.89

True Zero Bezel 55" Video Wall 1.89 pixel pitch

# Technical drawings

All measurements specified are in mm.



# More technology solutions from LamasaTech...

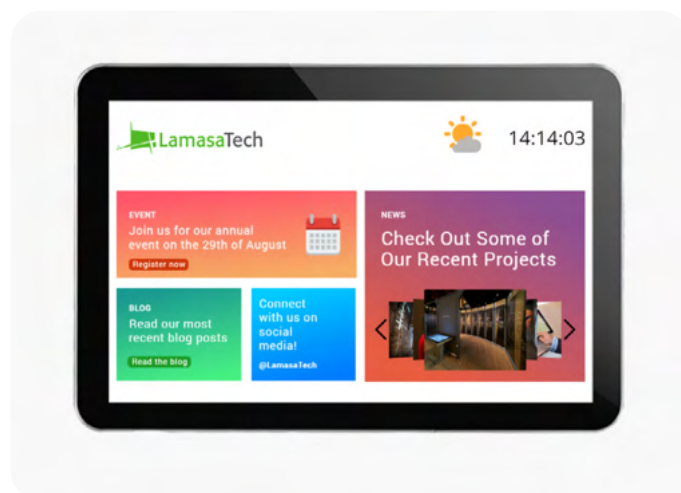
## Narrow bezel LCD video walls



## Video wall controllers



## Cloud-based digital signage platform



For more information on our digital solutions please visit [lamasatech.com](https://lamasatech.com)



## Contact us

---

UK: +44 (0) 191 341 0016

US: +1 (805) 308-9623

[hello@lomasatech.com](mailto:hello@lomasatech.com)

[lomasatech.com](http://lomasatech.com)